



Odoo CRM & ERP Brochure



We help businesses choose
the **most optimal** solution

Lars J. Croff



Founder of **Eazy-Office.com**

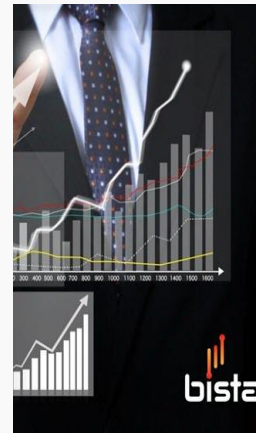
*"We help businesses by facilitating access to professional web solutions and services – boosting performance with **tailored consultancy**, we're covering all the steps from assessment to implementation. We work closely with our clients – ensuring the **most optimal solution** is selected for their business."*



ABOUT US – www.eazy-office.com

Eazy-Office.com offers integration of solutions that provides a wide range of easy-to-use business applications, giving companies easy access to the software they can utilize to run and grow their business.

Eazy-Office.com is owned and managed by a team of enthusiastic and business driven entrepreneurs. Our head office is located in Malmö, Sweden – so we can travel quickly to our clients from Copenhagen Airport.



OUR PARTNER – www.bistasolutions.com

Bista Solutions Inc. is a world-class software solutions company providing ingenious business solutions to a wide range of enterprises. With offices in USA, UAE & Canada and development center in India, catering to businesses in all global markets.

Their expertise in developing enterprise-grade business applications and customer-focused service has helped numerous businesses by saving them time, reducing costs/waste, and ultimately increasing business efficiency.

WHAT WE DO

OUR CONSULTANCY PROCESS



WHAT WE DO

OUR SERVICES



We have the in-house expertise and experience to work as your trusted partner and exceed your IT challenges.

From specific technical issues to the big strategic questions for your business, we are ready to offer insight and action. Learn how our IT consultancy and design services are here to help you define and meet new technology challenges in your organization.



Odoo CRM & ERP Integration

Odoo ensures that you have what you need to manage your company, staff and customers – in one place.



Power BI Integration

Power BI is a suite of business analytics tools that deliver insights throughout your organization.



WordPress CMS Web Design Services

We help businesses get a professional online presence with web design for WordPress CMS.



WooCommerce Webshop Integration

With WooCommerce we help extend your WordPress platform, by creating a great shopping experience for your visitors.

WHAT WE DO

SOLUTIONS WE INTEGRATE



We have the in-house expertise and experience to work as your trusted partner and exceed your IT challenges.

From specific technical issues to the big strategic questions for your business, we are ready to offer insight and action. Learn how our IT consultancy and design services are here to help you define and meet new technology challenges in your organization.

Odoo CRM & ERP Integration

Odoo ensures that you have what you need to manage your business.

Power BI Integration

Power BI is a suite of business analytics tools that deliver insights.

WordPress Web Design Services

We help businesses get a professional online presence with.

WooCommerce Web Shop Integration

With WooCommerce we help extend your WordPress platform, by creating a great.

Office 365 Integration

We help businesses get a professional online presence with.

Exchange Online Integration

With WooCommerce we help extend your WordPress platform, by creating a great.



ABOUT ODOO CRM & ERP

Odoo is the “all-in-one” CRM solution

Odoo is an all-in-one management software that offers a range of business applications that form a complete suite of enterprise management applications targeting companies of all sizes.

Stay on top with Odoo

Get a quick overview of what's going on in your team. See when a colleague logs a call or send a quote. Share ideas and files in real-time and catch-up things you missed when you were.

The flexibility of Odoo is such that apps (CRM, billing, accounting, manufacturing, warehouse- and project management, and inventory) can be added according to the growth of your company.

Main benefits you get by using Odoo in your business:

- Track leads, close opportunities, get accurate forecasts – and sell more efficiently.
- Send quotes in a few clicks. Convert quotes to sales orders and invoices from the same screen.
- Odoo covers all your business needs in a one-stop solution. No more painful integrations.

BOOST YOUR SALES



CRM



POS



Sales

INTEGRATE YOUR SERVICES



Project



Timesheets



Helpdesk

STREAMLINE YOUR OPERATIONS



Inventory



MRP



Purchase

MANAGE YOUR FINANCE



Invoicing



Accounting

GROW YOUR MARKETING REACH



Email Marketing



Marketing Automation

Odoo is comprehensive suite of business applications including: **CRM, Sales, Order Management, Accounting, Finances, Purchase, Warehouse Management, Production, Human Resources, Payroll Accounting, Project Management, Business Intelligence, CMS, E-commerce, and many more modules** are available.

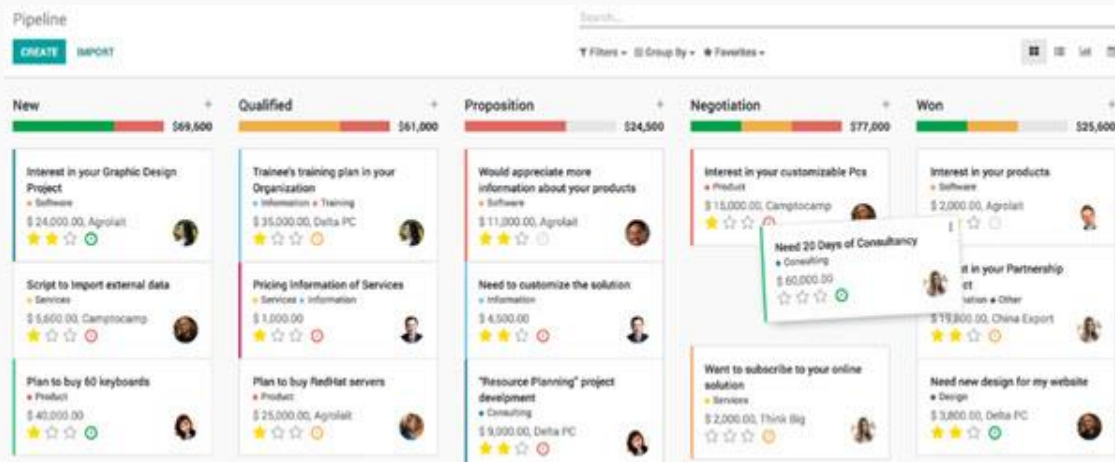
ABOUT ODOO CRM & ERP

Odoo Modules



ABOUT ODOO CRM & ERP

Odoo Features (CRM)

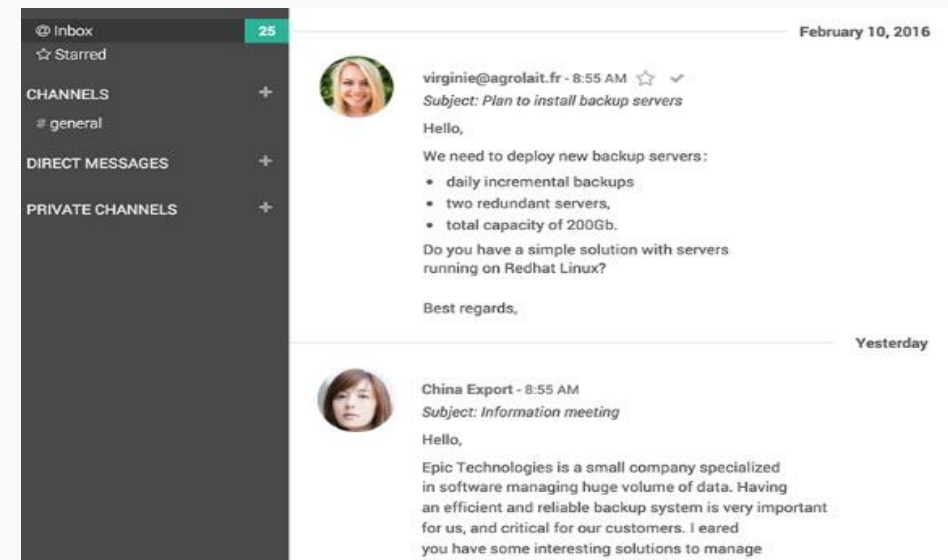


The real customer centric CRM - track leads, close opportunities and get accurate forecasts

Use actionable data to make better decisions. Get the insights you need to make smarter decisions. Design custom dashboards to get a picture of your business at a glance. Dig deeper with real-time reports and flow charts that anyone can create and share. **With Odoo CRM, you keep all the information about leads and customers in a single place. It's great and effective.**

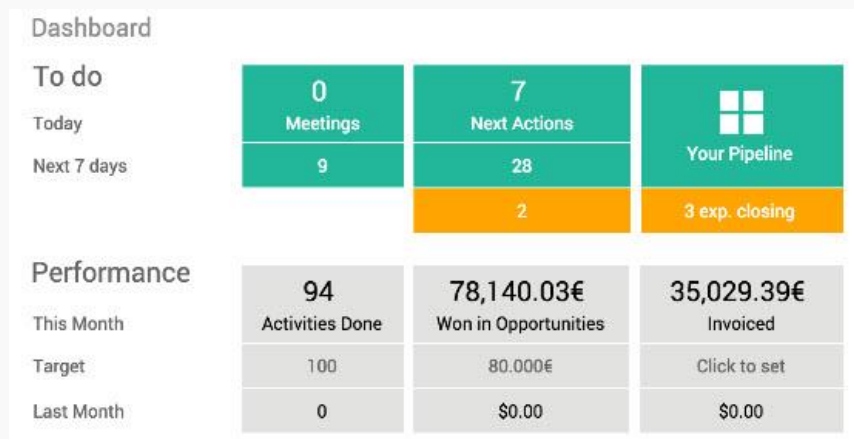
Stay connected to your customers

With real-time messaging to enhance collaboration. Get a quick overview of what's going on in your team. See when a colleague logs a call or send a quote. Share ideas and files in real-time and catch-up things you missed when you were away.



ABOUT ODOO CRM & ERP

Odoo Features (Sales)



Real-time overview - easily review your performances & next activities

Know exactly how you perform compared to your monthly targets. Organize your work based on your scheduled next actions. You can also schedule activities based on your sales scripts: calls, meetings, mailing, and quotations. With Odoo CRM, you keep all the information about leads and customers in a single place. **It's great and effective.**

Sell more with clean quotations, sell faster with electronic signatures

Professionally showcase your products and services. Send clear and complete quotations to your prospects. Convert quotations into sales orders with a single click, or let the customer sign off on it with a simple electronic signature.

Quotation **SO051** Edit Quote Print

| | |
|--|--|
| Customer: Agrolait, Thomas Passot | Your Contact: Antoine Langlais 04 28 00 00 24 admin@yourcompany.com |
| Bill To: Agrolait, Thomas Passot 69 rue de Namur 1300 Wavre - Belgium thomas.passot@agrolait.com | Quote Date: 02/29/2016 23:09:53 Expiration Date: 03/31/2016 |

Pricing

| Products | Quantity | Discount | Unit Price | Price |
|---------------------|---------------|----------------|------------------------------|--------------|
| Functional Training | 1.000 Unit(s) | 10.0% discount | \$-12,950.00 \$ 11,655.00 | \$ 11,655.00 |
| Technical Training | 1.000 Unit(s) | | \$ 0.00 | \$ 0.00 |
| Subtotal: | | | \$ 11,655.00 | |
| Taxes: | | | \$ 0.00 | |
| Total: | | | \$ 11,655.00 | |

✓ Accept
🗉 Feedback
✗ Reject

ABOUT ODOO CRM & ERP

Odoo Features (Purchases)

Requests for Quotation / PO00031

EDIT CREATE Print - Attachment(s) - Action - 1/1 < >

SEND RFQ BY EMAIL PRINT RFQ CONFIRM ORDER CANCEL RFQ RFQ SENT PURCHASE ORDER

Request for Quotation
PO00031

Vendor: **ASUSTeK** Order Date: 02/01/2018 16:21:08
Vendor Reference: Source Document: OP/00001_OP/00002
Purchase Agreement: **TED0001**

Products Deliveries & Invoices

| Product | Description | Scheduled Date | Quantity | Unit Price | Taxes | Subtotal |
|--------------------------|--------------------------|---------------------|----------|------------|-------|--------------|
| [RAM-SR5] RAM SR5 | [RAM-SR5] RAM DDR SR5 | 02/15/2018 01:00:00 | 3.000 | 50.00 | | \$ 150.00 |
| [PROD_DEL02] Datacard | [PROD_DEL02] Datacard | 02/06/2018 16:21:08 | 5.000 | 44.92 | | \$ 224.60 |
| [MBI9] Motherboard I9P57 | [MBI9] Motherboard I9P57 | 02/05/2018 16:21:08 | 15.000 | 2,207.45 | | \$ 33,111.75 |

Untaxed Amount: \$ 33,486.35
Taxes: \$ 0.00
Total: \$ 33,486.35

Automatically send RfQs to your suppliers based on your stocks levels

Automate your purchasing workflow. Improve your purchase and inventory performance with procurement rules depending on stock levels, logistic rules, sales orders, forecast manufacturing orders, etc. Select different replenishment methods for each product depending on your manufacturing and delivery strategies.

Make smart purchase decisions using the best prices

Use suppliers' price lists and references to make smarter purchase decisions based on promotions, quantities and special contract conditions. Keep track of a product availability in your supplier's stock and check your order status. You can even base your sales price on your supplier's prices.

Vendor Pricelists

Vendor x Search...

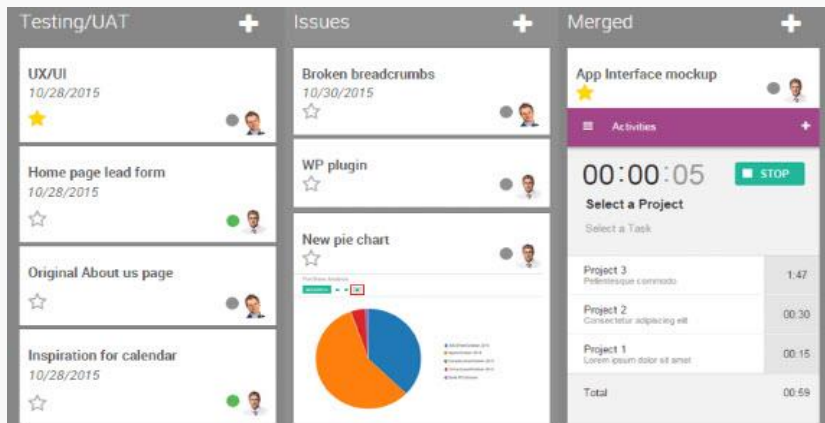
CREATE IMPORT

Filters Group By Favorites

| | Vendor | Product Variant | Product | Minimal Quantity | Price |
|------------------|---------------------------------------|-----------------|------------------------------------|------------------|------------|
| ASUSTeK (14) | | | | 17.00 | 10,594.000 |
| Agrolait (4) | | | | 4.00 | 4,136.000 |
| | <input type="checkbox"/> + Agrolait | | [PROD_DEL02] Datacard | 1.00 | 390.000 |
| | <input type="checkbox"/> + Agrolait | | [HDD-SH1] HDD SH-1 | 1.00 | 860.000 |
| | <input type="checkbox"/> + Agrolait | | [CARD] Graphics Card | 1.00 | 876.000 |
| | <input type="checkbox"/> + Agrolait | | [CPUi5] Processor Core i5 2.70 Ghz | 1.00 | 2,010.000 |
| Camptocamp (3) | | | | 2.00 | 1,464.000 |
| | <input type="checkbox"/> + Camptocamp | | [PROD_DEL] Switch, 24 ports | 1.00 | 55.000 |
| | <input type="checkbox"/> + Camptocamp | | [E-COM09] iMac | 1.00 | 1,399.000 |
| | <input type="checkbox"/> + Camptocamp | | [E-COM10] Apple Wireless Keyboard | 0.00 | 10.000 |
| China Export (2) | | | | 13.00 | 110.000 |
| Dalta PC (6) | | | | 7.00 | 3,478.500 |

ABOUT ODOO CRM & ERP

Odoo Features (Projects)

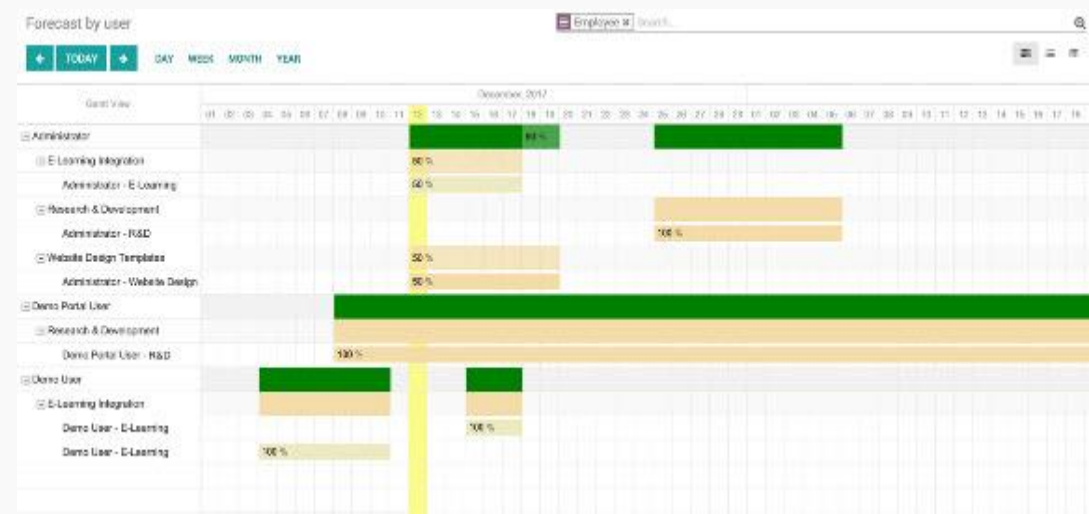


Harness the power of visual information - flexible project management made easy

Simplify your processes and enhance employees collaboration. Break down your project in bite-sized tasks and assign them to your team for improved collaboration. Create customized stages for each project to simplify your workflow overview and increase overall project efficiency.

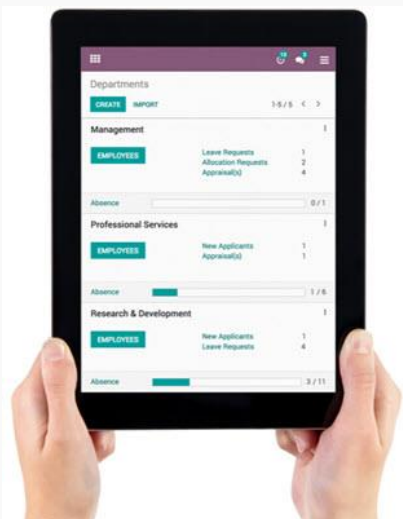
Forecast needs and resources, keep track of deadlines and progress of your projects

Schedule your teams across projects taking employees' holidays into account. Plan ahead for upcoming projects with forecasts based on comparable projects and estimate deadlines more accurately. Compare forecasts with real timesheets for increased profitability.



ABOUT ODOO CRM & ERP

Odoo Features (HR)



- ✓ Leaves
- ✓ Allocations
- ✓ Timesheets
- ✓ Attendances
- ✓ Appraisals
- ✓ Recruitments
- ✓ Expenses

Track time and attendance

Keep track of the employee hours worked and sort by project, client, or tasks. Weekly or monthly timesheets with optional attendance tracking. Easily access statistics to record and analyze timesheets as well as check each employee's attendance. Integrated accounting automatically posts reports based on time spent in projects providing real-time data.

Successfully manage your employees - centralize all your HR information.

Oversee all important information for each department at a glance. Restrict visibility of sensitive information to just HR managers, or make other information public for all employees to see such as employee directory.

Receive alerts for any new leave requests, allocation requests, applications, appraisals, and more.

Employees / Pieter Parker / Timesheets

Employee

Pieter Parker

Search...

IMPORT

SAVE

DISCARD

Filters

Group By

Favorites

1-8 / 8

<

>

| <input type="checkbox"/> | Date | Employee | Description | Project | Task | Time (Hours) |
|--------------------------|------------|---------------|--------------------------------|--------------------------|-----------------------------|--------------|
| <input type="checkbox"/> | 02/14/2018 | Pieter Parker | Support & Minor bug fixes | E-Learning Integration | Deploy and review | 00:00 |
| <input type="checkbox"/> | 02/11/2018 | Pieter Parker | Coding and module testing | Research & Development | | 03:00 |
| <input type="checkbox"/> | 02/11/2018 | Pieter Parker | Delivery and maintenance | Research & Development | User interface improvements | 01:00 |
| <input type="checkbox"/> | 02/11/2018 | Pieter Parker | Design and specification | Research & Development | | 01:00 |
| <input type="checkbox"/> | 02/11/2018 | Pieter Parker | Integration and system testing | Research & Development | Social network integration | 01:00 |
| <input type="checkbox"/> | 02/11/2018 | Pieter Parker | Requirements analysis | Research & Development | | 02:00 |
| <input type="checkbox"/> | 02/14/2018 | Pieter Parker | Research & Design | Website Design Templates | Create new components | 02:30 |
| <input type="checkbox"/> | 02/14/2018 | Pieter Parker | Specification writing | Website Design Templates | Basic outline | 01:00 |

ABOUT ODOO CRM & ERP

Odoo Features (Warehouse)

| | |
|--|--|
| Receipts YourCompany 5 TO RECEIVE Late 4 | Internal Transfers YourCompany 1 TRANSFERS Waiting Late 7 6 |
| Pack YourCompany 0 TRANSFERS Waiting Late 2 2 | Delivery Orders YourCompany 4 TO DO Waiting Late 13 17 |
| Receipts My Company, Chicago 0 TO RECEIVE | Internal Transfers My Company, Chicago 0 TRANSFERS |

Better organize your warehouse with the smart double entry inventory system

Improve performance and process time. Get the most efficient stocking method and improve all your internal operations.

Odoo's double-entry inventory has no stock input, output or transformation. Instead, all operations are stock moves between locations. **Maximize your warehouse efficiency with Odoo.**

Less stock and no stockouts with fully automated replenishment

Track every stock move with Odoo's unique double-entry inventory system. Use order points and automated RFQs to make your supply chain more efficient than ever. Track every stock move from purchase to warehouse bin to sales order.

Reordering Rules / OP/00004

SAVE **DISCARD** 4 / 4 < >

Active **Purchases**

Name: OP/00004

Product: [E-COM10] Apple Wireless Keyboard

Warehouse: Chicago Warehouse

Location: Chic/Stock

Procurement Group:

Rules

Minimum Quantity: 10.000

Maximum Quantity: 20.000

Quantity Multiple: 1.000

Misc

Lead Time: 1 Day(s) to purchase

ABOUT ODOO CRM & ERP

Why should you choose Odoo?

Odoo offers a wealth of functionalities with over a 1000 modules that can be deployed to meet your business needs. Odoo is actively being developed and supported by the community and the stack of functionality continues to increase. Finding an ERP system that has the functionality you require is important.

Odoo is based on a technology stack that is modern and up-to-date. These technologies continue to be developed and adapted to the latest paradigms, and so is Odoo.

Another improvement with an integrated system such as Odoo is the availability of on demand and up-to-date reports that could take days, weeks, or months to produce in other circumstances. Often companies make the mistake to see an ERP system as a cost center and fail to see the potential for these improvements.

Odoo is not only an easy to use software, it also highly flexible. Odoo can be tailored to fit your company's specific business requirements. In a highly competitive and fast changing world, companies like yours need to constantly push and innovate to keep pace with changing business scenarios. This can only be achieved with the right tools.

Top 5 reasons for using the Odoo CRM & ERP solution in your business:

- Easy to learn and use
- Modern and up-to-date user interface
- Comprehensive integrated functionality
- Can be customized and tailored to your needs
- Cost-efficient license pricing and low TCO

Odoo is a “one-stop” solution for your business!

ABOUT ODOO CRM & ERP

What does Odoo cost?

SERVER

€ **40**
PER MONTH

UP TO 30 USERS

Intel Core i7-6700 CPU

64 GB DDR4 RAM

2 x 240 GB SSD HD

Server is rented by the customer at **Hetzner.com*

LICENSE

Starting at
€ **25**
PER MONTH

PRICE PER USER

Odoo Enterprise License

Access to All Odoo Modules

Mobile App For iPhone/Android

License(s) is purchased by the customer at **Odoo.com*

SUPPORT

€ **999**
PER MONTH

08:00 TO 17:00

Phone & Email Support

Remote Assistance/Resolution

Response Time 2-4 Hours

Solution Monitoring

Solution Backup & Restore

Questions about Odoo

1

Which other cost do I have to consider for the implementation of Odoo?

The basic installation of the system is included in the service cost. Other implementation costs such as configuration, employee training, data migration, detailed adaptation, development will vary depending on the size of the implementation and the usage of the system. **Get in touch with us for a detailed quotation.**

2

Can Odoo be integrated with other third-party systems and solutions?

Yes, in our **live demo section** you can test such an integration between **Odoo and Power BI Analytics**. Our implementation team has already made connections to well known systems such as **Magento, Amazon, EBay, WooCommerce, PayPal, QuickBooks Accounting, MailChimp**, and many more.

3

How long does it generally take to complete the implementation of Odoo?

Implementations with default modules can take somewhere between **1 to 2 months**, this will vary depending on the type of business and on a "case to case" basis. Another part of the Odoo implementation is the customization – this is the part where the estimation solely depend on the modifications you want.

4

Can I access Odoo from a mobile device when I'm out of the office?

Yes, with the **Odoo Mobile** app you can access messages, contacts, notes, orders, track your inventory, manage your meetings at your fingertips and you can use them anywhere to keep watch on your business. Odoo Mobile is a native mobile application **available for Android and iPhone**.



GET IN TOUCH

CONTACT US

To learn more about our service offerings and industry expertise, or to have one of our consulting professionals contact you directly – you can get in touch with us using the channels listed below.

ADDRESS: **EO Web Solutions AB**
Västergatan 36, 211-21 Malmö
Sweden

PHONE: **+46 (0)764-668 600**

EMAIL: **info@eazy-office.com** WWW: **www.eazy-office.com**

Thanks for your attention!